

# COASTAL AREA NEW HAVEN, CONNECTICUT

## LEGEND

 Coastal Area

## EXPLANATION

The Coastal Area includes the land and waters that lie within the coastal area delineated by the following: the westerly, southerly and easterly limits of the state's jurisdiction in Long Island Sound; the towns of Greenwich, Stamford, Darien, Norwalk, Westport, Fairfield, Bridgeport, Stratford, Shelton, Milford, Orange, West Haven, New Haven, Hamden, North Haven, East Haven, Branford, Guilford, Madison, Clinton, Westbrook, Deep River, Chester, Essex, Old Saybrook, Lyme, Old Lyme, East Lyme, Waterford, New London, Montville, Norwich, Preston, Ledyard, Groton and Stonington.

Activities and actions conducted within the coastal area by Federal and State Agencies (i.e., U.S. Army Corps of Engineers (USACE), DEP regulatory programs, and state plans and actions) must be consistent with all of the applicable standards and criteria contained in the Connecticut Coastal Management Act. A subset of the Coastal Area, the coastal boundary, represents an area where activities regulated or conducted by coastal municipalities must be consistent with the Coastal Management Act.

## DATA SOURCES

**COASTAL AREA DATA** - The Town Boundary map was used as the basis for extracting specified coastal town maps. Features appearing in the source layer were manually selected, copied and used as the basis for features in the Coastal Area layer. Specific polygons from the Town Boundary layer along with the state jurisdiction line from the USGS 7.5 minute quadrangle maps were selected and merged into one single polygon feature to create the Coastal Area layer. Data was compiled at 1:24,000 scale.

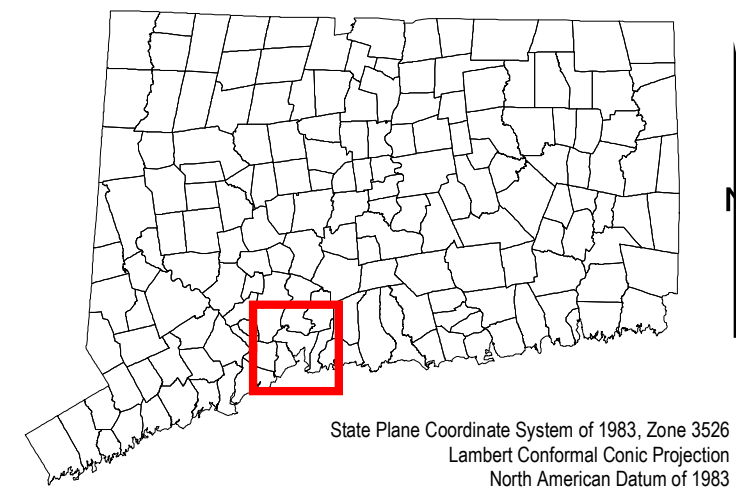
**BASE MAP DATA** - Based on data originally from 1:24,000-scale USGS 7.5 minute topographic quadrangle maps published between 1969 and 1992. It includes political boundaries, railroads, airports, hydrography, geographic names and geographic places. Streets and street names are from Tele Atlas<sup>®</sup> copyrighted data. Base map information is neither current nor complete.

## RELATED INFORMATION

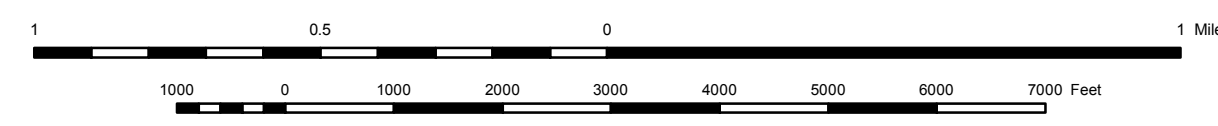
This map is intended to be printed at its original dimensions in order to maintain the 1:24,000 scale (1 inch = 2000 feet).

**MAPS AND DIGITAL DATA** - Go to the CT ECO website for this map and a variety of others. Go to the DEEP website for the digital spatial data shown on this map.

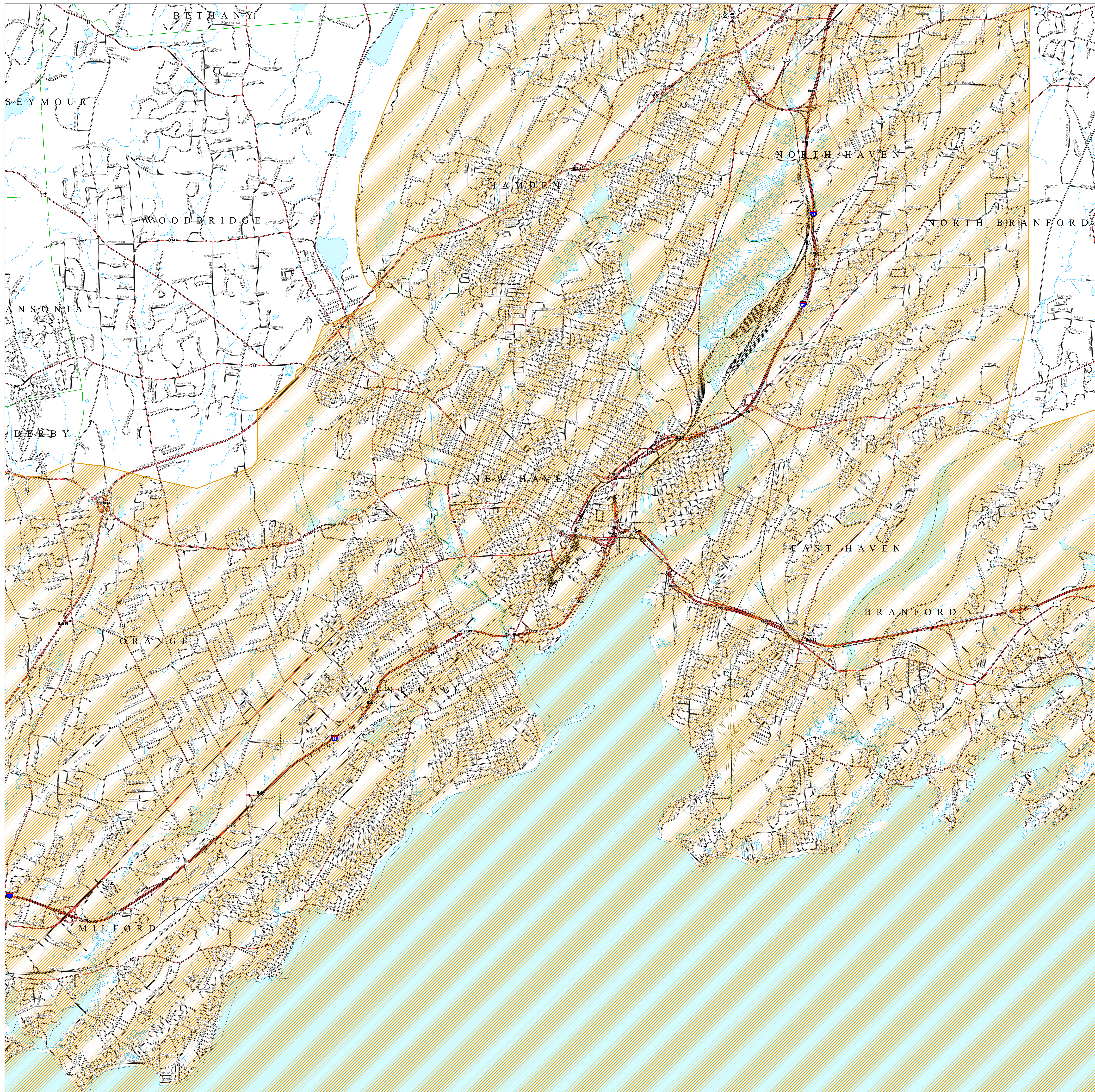
## MAP LOCATION



State Plane Coordinate System of 1983, Zone 32S  
Lambert Conformal Conic Projection  
North American Datum of 1983



SCALE 1:24,000 (1 inch = 2000 feet) when map is printed at original size



STATE OF CONNECTICUT  
DEPARTMENT OF  
ENERGY & ENVIRONMENTAL PROTECTION  
79 Elm Street  
Hartford, CT 06106-5127

Map created by DEEP  
January 2013  
Map is not colorfast  
Protect from light and moisture