

DEPARTMENT OF
ENERGY & ENVIRONMENTAL PROTECTION
PROPERTY

WASHINGTON, CONNECTICUT

LEGEND

	State Forest	Allowed uses generally include forestry practices, hunting and trapping, camping, and most state park uses. Generally distinguished from state parks for their permitted hunting activities. A few state forests, however, do not allow hunting. Visit the DEEP Wildlife for more information about hunting on state forest property.
	State Park	Primary uses are general outdoor recreation such as hiking, biking, swimming, boating, and camping. Hunting or trapping is generally not allowed in state parks, although there are exceptions. Visit the DEEP website for additional information on each state park.
	State Park Scenic Reserve	State parks with unusual or extraordinary natural features that have scenic qualities. Examples are Sunset Rock State Park, Bluff Point Coastal Reserve, and Lovers Leap State Park.
	State Park Trail	Linear state parks where trail activities are the primary activity, such as walking, running, bicycling, and horseback riding. Airline State Park Trail in Hebron is one example of a state park trail.
	Natural Area Preserve	State land that is approved by the Governor as a "natural area". A natural area is defined in the Connecticut State Statutes as "...an area of land or water, or land and water, containing, or potentially containing, plant or animal life or features of biological, scientific, educational, geological, paleontological, or scenic value worthy of preservation in their natural condition". Some examples of natural area preserves are Canaan Mountain Natural Area Preserve and Hammonasset Natural Area Preserve.
	Historic Preserve	An area that has historic significance. One example is Industrial Monument Historic Preserve in North Canaan that contains the state's last remaining iron furnace.
	Wildlife Area	An area where wildlife habitat is managed to maintain stable, healthy populations of wildlife. Hunting and trapping is generally allowed within these areas. Some wildlife areas are the Charles E. Wheeler Wildlife Area in Milford and the Barn Island Wildlife Area in Stonington.
	Wildlife Sanctuary	An area where wildlife is protected and hunting or trapping is not allowed, such as the Shade Swamp Wildlife Sanctuary in Farmington.
	Owned Waterbody	Body of water owned by DEEP and usually used for recreation purposes. Examples are Besect Lake in Middlefield and Hopetown Pond in Griswold.
	Water Access	Access areas along lakes, ponds, rivers, streams, coves, Long Island Sound, etc. that provide public access for recreation purposes. Many of these sites are also boat launch locations. Some include Bolton Lake Water Access as well as many sites on the Connecticut River.
	Flood Control Area	An area that is managed for flood control and that generally contains dams and related structures and impoundment areas. Some of these areas are also used for public recreation. Examples are Yantic River in Norwich and Rooster River in Norwich.
	Fish Hatchery	Facility where fish are either farmed or held for stocking in statewide waterbodies and waterways. DEP's three major hatcheries are the Quinebaug Fish Hatchery, the Burlington Fish Hatchery, and the Kensington Atlantic Salmon Fish Hatchery.
	Other	Areas that may have recently been purchased and have not yet been assigned to a category, or areas that are unique and do not fit into any of the above categories. Examples are Sunrise Resort, Trout Brook Valley, Sterling Radio Tower Site, and Schaghticoke Indian Reservation.

EXPLANATION

This map identifies parcels of land that are owned by the Connecticut Department of Energy and Environmental Protection (DEEP). Types of land include parks, forests, scenic reserves, trails, natural area preserves, historic preserves, wildlife sanctuaries, wildlife management areas, water access areas and waterbodies, flood control areas, fish hatcheries and other lands that are not categorized. Some of these parcels may contain support facilities such as employee residences, maintenance buildings, dams and dam control structures, parking lots, DEEP district headquarters and field offices, nature centers, museums,

and outdoor and indoor educational facilities. Each DEEP property, rather than each individual parcel, is labeled with the property name. For example, although Pachaug State Forest contains many independent parcels of land, "Pachaug State Forest" is placed only once on the map.

All DEEP owned property is meant to be included on this map; however, there may be omissions due to incomplete or incorrect land records. This map is updated as new property is acquired.

DATA SOURCES

DEEP PROPERTY DATA - This map is based on information from the Connecticut Department of Energy and Environmental Protection's land records. The land records include information about the acquisition history for each parcel, and contain the maps that were used to create the digital data. The source maps are in a variety of formats and range from rough sketches to Class A survey maps. Some of the parcel boundaries were created using the USGS Topographic Quadrangle maps as a base. As a result, there is no consistent accuracy level among the parcels and the boundaries should not be used for legal boundary purposes.

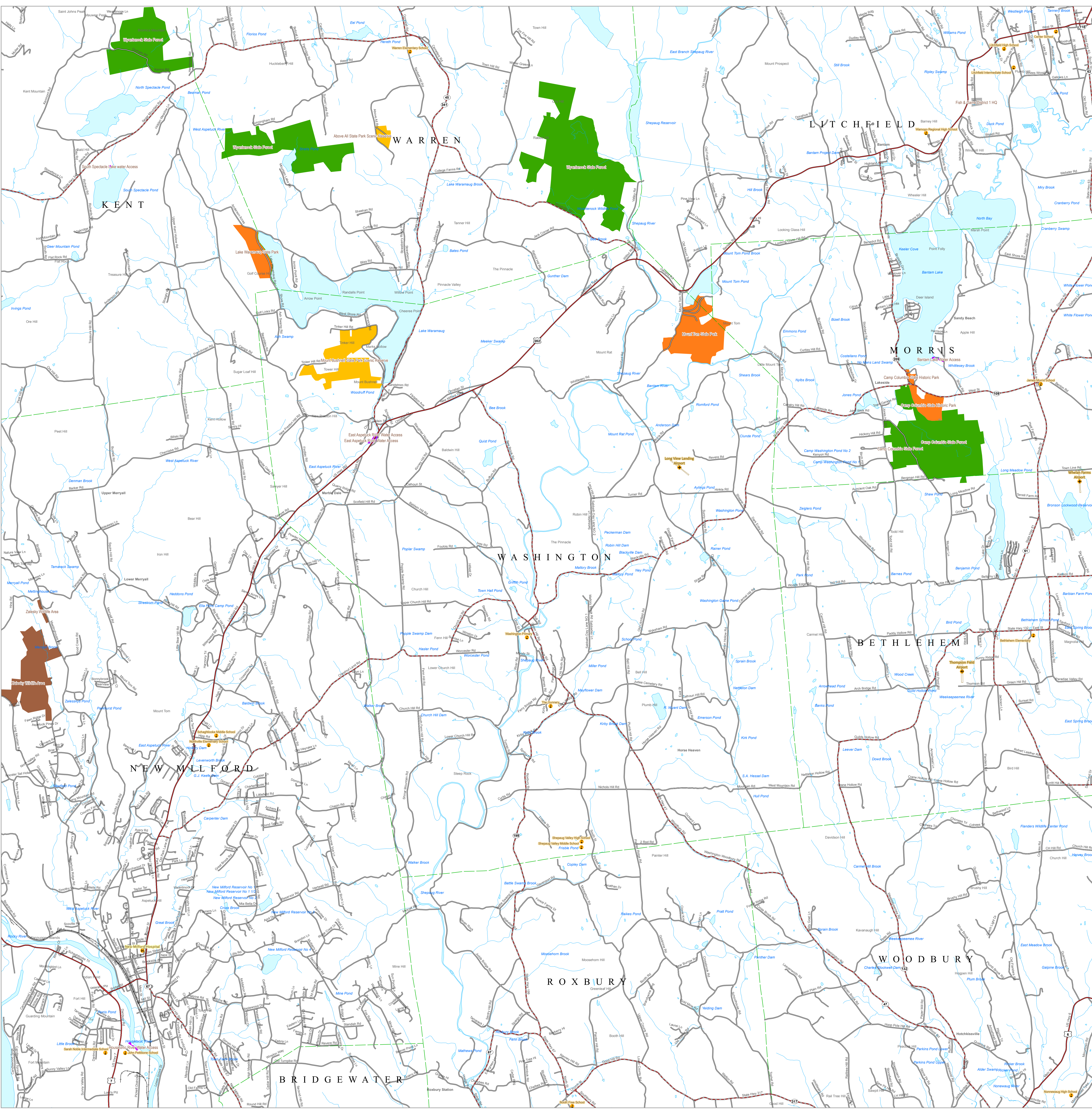
BASE MAP DATA is based on data originally from 1:24,000-scale USGS 7.5 minute topographic quadrangle maps published between 1969 and 1992. It includes political boundaries, railroads, airports, hydrography, geographic names and geographic places. Streets and street names are from Tele Atlas copyrighted data. Base map

information is neither current nor complete.

MAP SCALE INFORMATION - This map is intended to be printed at its original dimensions. Printing this map at a scale greater than 1:24,000 (1 inch = 2000 feet) may result in inaccuracies in parcel boundaries and locations.

MAPS AND DIGITAL DATA Visit the CT ECO website for other natural resource and environmental maps at <http://www.cteco.uconn.edu>. Visit the CT DEEP GIS website to download any of the digital spatial data shown on this map at <http://www.ct.gov/deep/gisdata>.

FOR MORE INFORMATION about DEEP Property, contact the Land Acquisition Division of the Connecticut Department of Energy and Environmental Protection at 860-424-3016.



STATE OF CONNECTICUT
DEPARTMENT OF
ENERGY & ENVIRONMENTAL PROTECTION
79 Elm Street
Hartford, CT 06106-5127

Map prepared by CT DEEP
July 2014
Map is not colorfast
Protect from light and moisture