

# 2004 Coastal Color Infrared Orthophoto Old Saybrook, CT

## EXPLANATION

This map displays 2004 color infrared orthophotography covering Long Island Sound coastal communities. The aerial flight spanned two days during September 2004 and the imagery was collected in panchromatic, Red, Green, Blue and Near Infrared which yielded both natural color and false color infrared versions of the completed digital orthophotography. The orthophotos are 0.5 meter (1.64 feet) in resolution. Additional GIS data such as major interstates, US routes, state routes,

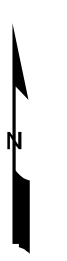
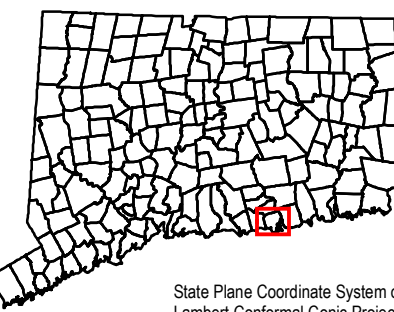
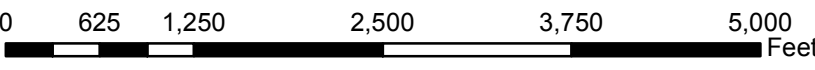
streets, railroads, and ferry crossings are displayed as well as airports, hospitals, educational facilities, train stations, and town boundaries. Important geographic locations and waterbodies are labeled. The location and shape of features in the GIS layers may not exactly match information shown in the aerial photography primarily due to differences in spatial accuracy and data collection dates.

## DATA SOURCES

ORTHOPHOTOGRAPHY - This imagery was made possible by a grant from the NOAA Coastal Services Center in collaboration with the University of Connecticut, Wesleyan University and the Connecticut Department of Environmental Protection. Data collection and processing was performed by EarthData International.

BASE MAP DATA - All data is based on 1:24,000 scale and displays geographic names, places and their symbols, town boundaries, airports, and railroads. Base map data is neither current nor complete. Street data is based on TeleAtlas copyrighted data.

MAPS AND DIGITAL DATA - Visit the CT ECO website for this map and a variety of others in PDF format. Visit the CT DEP website to download the base map digital spatial data shown on this map.



Map prepared by CT DEP, January 2011.  
Map is not colorfast.  
Protect from light and moisture.



STATE OF CONNECTICUT  
DEPARTMENT OF  
ENVIRONMENTAL PROTECTION  
79 Elm Street  
Hartford, CT 06106-5127