



2006 Orthophotography Plainville, CT

EXPLANATION

This map displays 2006 National Agriculture Imagery Program (NAIP) orthophotography for the State of Connecticut. It is a natural color, leaf on, 3.39 feet (1 meter) aerial survey taken on July 16th and 17th and August 5th, 13th, 14th, or 16th, depending on the area. The statewide mosaic is not color balanced so tonal imbalances between individual input image is not corrected. This will create differences in the range and intensity of colors depending on the area viewed. The location and shape of features in other

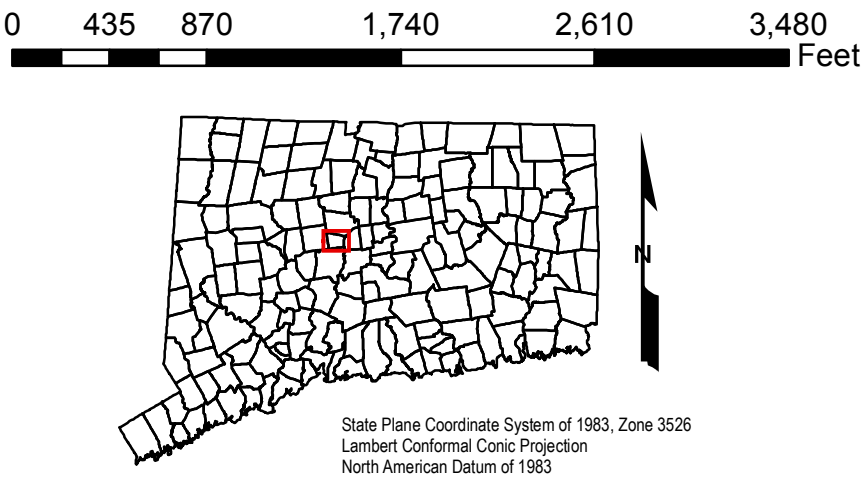
GIS layers will not exactly match information shown in the aerial photography primarily due to differences in spatial accuracy and data collection dates. Street-level data such as major interstates, US routes, state routes, streets, railroads, and ferry crossings are displayed yet may not match the locations of such features in the orthophotos. Also shown are airports, hospitals, educational facilities, train stations, and town boundaries. Important geographic locations and waterbodies are labeled.

DATA SOURCES

ORTHOGRAPHOTOGRAPHY - Imagery provided by the National Agriculture Imagery Program, (NAIP); a part of the USDA's Farm Service Agency through the Aerial Photography Field Office in Salt Lake City.

BASE MAP DATA - All data is based on 1:24,000 scale and displays geographic names, places and their symbols, town boundaries, railroads, and airports. Base map data is neither current nor complete. Street data is based on TeleAtlas copyrighted data.

MAPS AND DIGITAL DATA - Visit the CT ECO website for this map and a variety of others in PDF format. Visit the CT DEP website to download the base map digital spatial data shown on this map.



Map prepared by CT DEP, December 2010.
Map is not colorfast.
Protect from light and moisture.



STATE OF CONNECTICUT
DEPARTMENT OF
ENVIRONMENTAL PROTECTION
79 Elm Street
Hartford, CT 06106-5127