

# 2010 Coastal Natural Color Orthophoto Branford, CT (East)

## EXPLANATION

This map displays 2010 natural color orthophotography covering areas of coastal Connecticut within 1,000 feet of the shoreline and regulated tidal wetlands, all offshore islands, and the Connecticut River to the Massachusetts state line. The data was collected between June 15th and 19th, 2010, when the tidal stage was +/- 1 hour of the predicted low tide. Since it was collected during the growing season, the data is categorized as "leaf-on" orthophotography in which vegetation obscures some ground features. The 2010 orthophotography used to produce this map has a ground resolution of 1 foot (0.305 meter) per

image pixel. Additional GIS data displayed includes major interstates, US routes, state routes, streets, ferry crossings, airports, hospitals, educational facilities, train stations, and town boundaries. Important geographic locations and waterbodies are labeled. The location and shape of features in the GIS layers may not exactly match information shown in the aerial photography primarily due to differences in spatial accuracy and data collection dates.

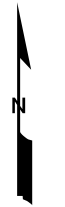
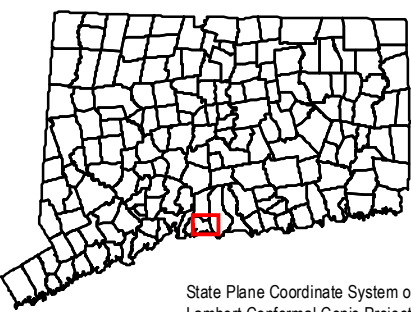
## DATA SOURCES

ORTHOGRAPHY - Imagery compiled by PhotoScience, Inc., and published by the DEP Office of Long Island Programs.

BASE MAP DATA - All data is based on 1:24,000 scale and displays geographic names, places and their symbols, town boundaries, airports, and railroads. Base map data is neither current nor complete. Street data is based on TeleAtlas copyrighted data.

MAPS AND DIGITAL DATA - Visit the CT ECO website for this map and a variety of others in PDF format. Visit the CT DEP website to download the base map digital spatial data shown on this map.

0 0.05 0.1 0.2 0.3 0.4  
Miles



Map prepared by CT DEP, April 2011.  
Map is not colorfast.  
Protect from light and moisture.



STATE OF CONNECTICUT  
DEPARTMENT OF  
ENVIRONMENTAL PROTECTION  
79 Elm Street  
Hartford, CT 06106-5127