

PROTECTED OPEN SPACE NEWTOWN, CONNECTICUT

LEGEND

Symbol	Category	Description
	Federal	Federally owned land. Examples include Army Corps of Engineers property such as Mansfield Hollow or Thomaston Dam properties.
	Land Trust	Parcels owned by a land trust. Land trusts are generally private, non-profit entities that own land for preservation.
	Municipal	Municipally-owned parcels that include undeveloped open space parcels and parcels that are less than 50% developed in terms of buildings and facilities (ball fields, swimming pools, tennis courts, etc.).
	Private	Any privately owned lands (excluding land trusts) that are primarily open space, such as fish and game clubs and camps.
	State	State owned property such as parks and forests, flood control areas, and preserves. Primarily property owned by the Department of Environmental Protection.

- Open Water
- River, Brook, Stream
- Town Boundary
- State Boundary
- County Boundary
- Interstate Highway
- US Route Highway
- State Route Highway
- Highway Ramp
- Local Road
- Railroad

EXPLANATION

This map identifies parcels of open space land for towns included in the Department of Environmental Protection's Protected Open Space Mapping (POSM) project. Because this project is ongoing and incomplete, some towns are not represented. As towns are completed, new data will be added to the map.

Only parcels that meet the criteria of protected open space as defined by the POSM project are included. Protected open space is defined as:
Land or interest in land acquired for the protection of natural features of the state's landscape or essential habitat for endangered or threatened species; or
Land or interest in land acquired to support and sustain non-facility based outdoor recreation, forestry and fishery activities, or other wildlife or natural resource conservation or preservation activities.

Types of property that may be included in this map are landholdings of Federal, State, municipal, or other government entities; land held by private land conservation organizations or trusts; and church, religious, or non-profit open space lands.

Types of property that are not on this map include administration buildings, airports, athletic fields, commercial campgrounds, cemeteries, country clubs, golf courses, dog ponds, landfills, fire department lands, historic homes, libraries, marinas, museums, parking facilities, police stations, and others. Generally, parcels under 10 acres that contain buildings are not included and parcels with developed recreation facilities such as ballfields are not included unless the facilities comprise less than 50% of the total parcel area.

DATA SOURCES

PROTECTED OPEN SPACE DATA - This map is based on information from various sources collected and compiled during the period from March 2005 through the present. These sources include municipal Assessor's records (the Assessor's database, hard copy maps and deeds) and existing digital parcel data. The data collected represents conditions on the date of research at each city or town hall and is not updated.

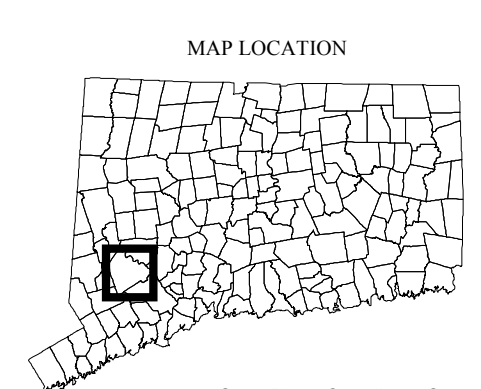
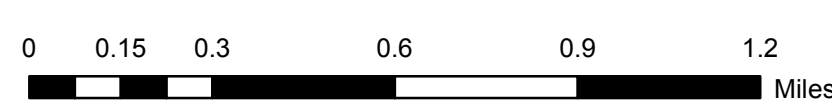
BASE MAP DATA is based on data originally from 1:24,000-scale USGS 7.5 minute topographic quadrangle maps published between 1969 and 1992. It includes political boundaries, railroads, airports, hydrography, geographic names and geographic places. Streets and street names are from Tele Atlas copyrighted data. Base map information is neither current nor complete.

MAP SCALE INFORMATION - This map is intended to be printed at its original dimensions. Printing this map at a scale greater than 1:24,000 (1 inch = 2000 feet) may result in inaccuracies in parcel boundaries and locations.

MAPS AND DIGITAL DATA
Visit the CT ECO website for other natural resource and environmental maps at <http://www.ct.eco.uscom.edu>.
Visit the CT DEP GIS website to download any of the digital spatial data shown on this map at <http://www.ct.gov/dep/gisdata>.

FOR MORE INFORMATION about the POSM project, contact the Land Acquisition Division of the Connecticut Department of Environmental Protection at 860-424-3016.

This map is intended to be printed at original size (48 x 36 in)

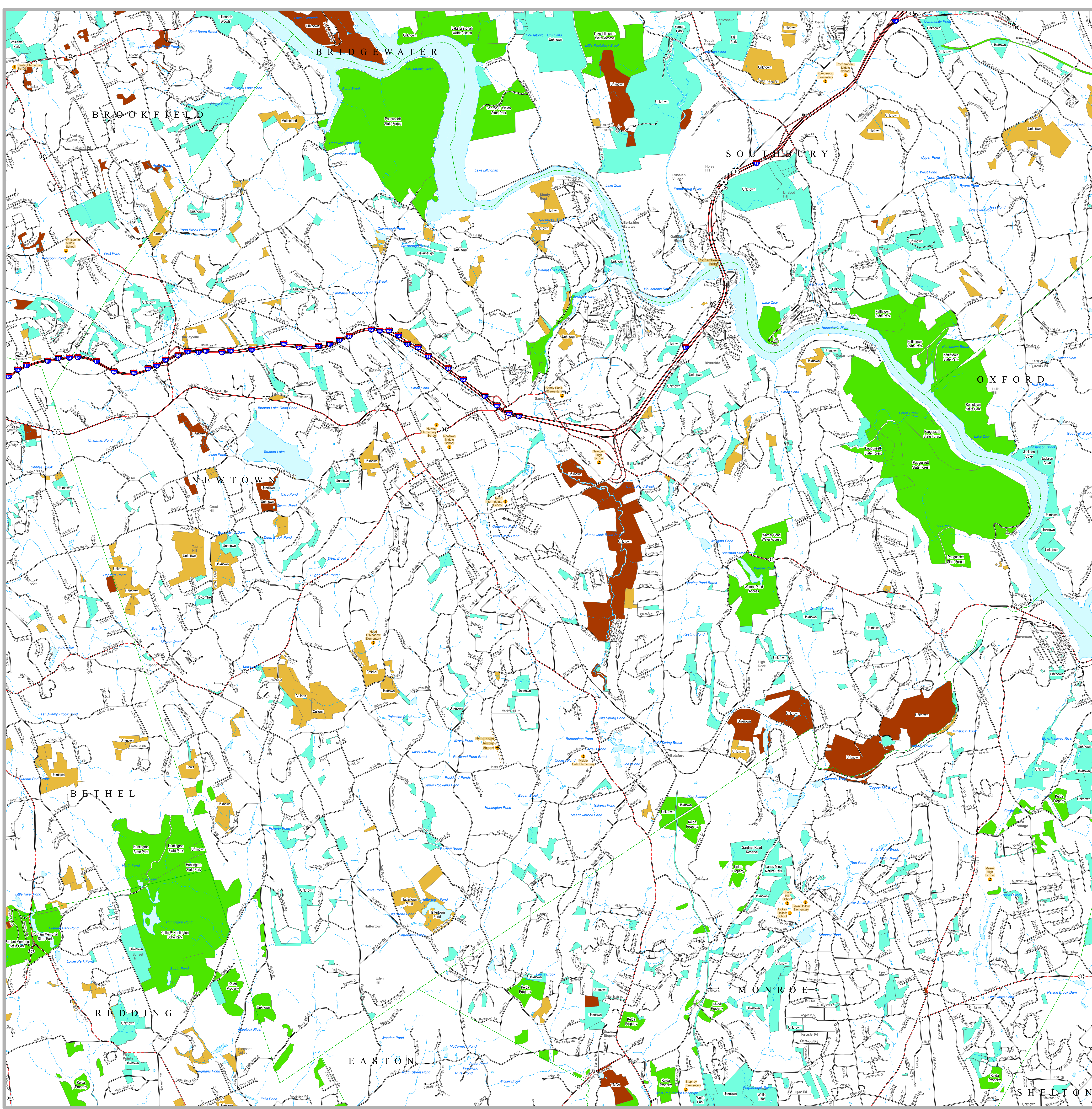


State Plane Coordinate System of 1983, Zone 3026
Lambert Conformal Conic Projection
North American Datum of 1983



STATE OF CONNECTICUT
DEPARTMENT OF
ENERGY & ENVIRONMENTAL PROTECTION
79 Elm Street
Hartford, CT 06106-5127

Map prepared by CT DEEP
August 2011
Map is not colorfast
Protect from light and moisture



SHELTON