

QUATERNARY GEOLOGY

WESTBROOK, CONNECTICUT

LIST OF MAP UNITS

POSTGLACIAL DEPOSITS - late Holocene, late Wisconsin	GLACIAL MELT-WATER DEPOSITS - late Wisconsin	Explanation of Map Symbols
Artificial Fill	Undifferentiated Meltwater Deposits	Ice Margin Position
Coastal Beach and Dune Deposits	Deposits of Major Ice-Dammed Lakes	Inferred Ice Margin Position
Tidal Marsh Deposits	Deposits of Major Sediment-Dammed Lakes	Esker
Floodplain Alluvium	Deposits of Related Series of Major Ice-Dammed Ponds	Glacial Stratification or Groove
Swamp Deposits	Deposits of Related Series of Major Sediment-Dammed Ponds	Drumlin Axis and Center
Talus	Deposits of Proximal Meltwater Streams	Meltwater Channel
EARLY POSTGLACIAL DEPOSITS - early Holocene, late Wisconsin	Deposits of Distal Meltwater Streams	Glacial Lake Spillway
Stream Terrace Deposits	Deposits of Distal Meltwater Streams	Inferred Glacial Spillway
Inland Dune Deposits	Deposits of Distal Meltwater Streams	Location of Lower Till
	GLACIAL ICE-LAKE DEPOSITS - late Wisconsin, Illinoian	Two-Till Outcrop
	Thin Till Deposits	Deltaic Bedding Locality
	Thick Till Deposits	Weathered Bedrock Outcrop
	End Moraine Deposits	Radioisotope-Dated Locality
Explanation of Map Symbols	Elevation Contours	
Area of glacial/ice-lake deposits grading to glacial lake	100 Ft. Interval	
Area of lake-bottom sediments	50 Ft. Interval	
Drainage Divide - Boundary between major geologic basins		
Drainage Divide - Boundary within major geologic basin dividing it into north-draining and south-draining regions		

EXPLANATION

Quaternary Geology is 1:24,000-scale data that illustrates the geologic features formed in Connecticut during the Quaternary Period, which spans from 2,588 ± 0.005 million years ago to the present and includes the Pleistocene (glacial) and Holocene (postglacial) Epochs. The Quaternary Period has been a time of development of many details of the Connecticut landscape and all surficial deposits. At least twice in the last Pleistocene, continental ice sheets swept across Connecticut from the north. Their effects are of prime importance to present-day occupants of the land.

The Quaternary Geology information illustrates the geologic history and the distribution of depositional environments during the emplacement of nonconsolidated glacial and postglacial surficial deposits and the landforms resulting from those events in Connecticut. These deposits range from a few feet to several hundred feet in thickness, overlie the bedrock surface and underlie the organic soil layer of Connecticut. Quaternary Geology is mapped without regard for any organic soil layer that may overly the deposit.

The Connecticut Quaternary Geology information was initially compiled at 1:24,000 scale (1 inch = 2,000 feet) then recomputed for a statewide 1:125,000-scale map, Quaternary Geology Map of Connecticut and Long Island Sound Basin. A companion map, the Surficial Materials Map of Connecticut, emphasizes the surface and subsurface texture (grain-size distribution) of these materials. The quaternary geology and surficial material features portrayed on these two maps are very closely related; each contributes to the interpretation of the other.

Most of Connecticut's surficial material is glacially derived, and can be divided into two broad depositional categories: Glacial Ice-Lake Deposits (nonsorted and generally nonstratified thin till, thick till, and end moraine) which are generally exposed in the uplands, and are the most widespread surficial deposit in Connecticut; and Glacial Meltwater Deposits (sorted and stratified deltaic, river bottom, lake bottom, and inland dune deposits) which are most commonly concentrated in valleys and lowlands.

Particular attention has been paid to understanding the distribution and characteristics of stratified meltwater deposits because they have historically influenced development patterns and groundwater availability throughout the state. Within the meltwater category, six classes of deposits have been recognized based on the conditions that prevailed during their emplacement. Four of the seven indicate whether previously deposited sediment, or the glacier itself, impounded the lake or pond where emplacement occurred (see the meltwater deposit discussion below). Meltwater stream deposits are differentiated based on their distance (proximal or distal) from the ice sheet when they were emplaced, and a separate meltwater map unit is reserved for deposits of undetermined provenance (unsorted).

Glacial Ice-Lake Deposits (nonsorted and generally nonstratified thin till, thick till, and end moraine), Glacial Meltwater Deposits (sorted and stratified deltaic, river bottom, and inland dune deposits) were laid down in glacial streams, lakes and ponds which occupied the valleys and lowlands of Connecticut as the last ice sheet systematically (Kottief and Poesl, 1981) melted away to the north. They are often composed of layers of well-to-poorly sorted sands, gravels, silts and clays with few to no boulders, and owing to their water-related depositional origins they have many characteristics that are favorable for development. Because water is a better sorting agent than ice, glacial meltwater deposits are commonly better sorted, more permeable, and better aquifers than ice-lake deposits. They can be good sources of construction aggregate, and are relatively easy to excavate and build highways and buildings on. Stratified meltwater deposits include both fine and coarse grained deposits such as silt, clay, sand, and gravel.

The mapping presented here and on the Quaternary Geology Map of Connecticut and Long Island Sound Basin is based on recognizing single bodies of sediment or assemblages of glacial sedimentary facies that can be identified as mappable units known as morphosequences (Kottief and Poesl, 1981). Different sedimentary facies are associated with fluvial, deltaic and lake-bottom settings. Coarse proximal deposits are emplaced in high-energy settings at or near the ice front. Energy levels dropped off with distance from the glacier (distally) and grain size decreased along the path of meltwater flow. As a result, morphosequences are coarse grained at their collapsed, ice-contact heads and become finer distally (Figure 1). A detailed discussion of the complexities and significance of morphosequences is contained in the pamphlet that accompanies the Quaternary Geology Map of Connecticut and Long Island Sound Basin.

Deposition of the morphosequences that progressively filled bedrock valleys and lowlands as the last glacier melted northward required the presence of impounded lakes and ponds. The nature of the impoundments and the resulting distribution of the meltwater deposits on the landscape were controlled by the topography of the area being glaciated. Where a northward succession of ice sheets was emplaced, the south-draining basins, previously deposited sediment formed the dams, and the oldest morphosequences occupied the lowest, widest parts of the valley. Deposition then progressed up valley, with the youngest depositional sequences occupying higher, narrower portions of the valley (Figure 2). In north-draining systems the opposite is true. The ice itself was the impoundment, and the oldest morphosequences were emplaced in the higher, narrower portions of the basin. As the ice front retreated northward, a succession of lower bedrock spillways were opened and the valleys widened. In this case, the youngest depositional sequences occupied the lowest, widest portions of the valley (Figure 2).

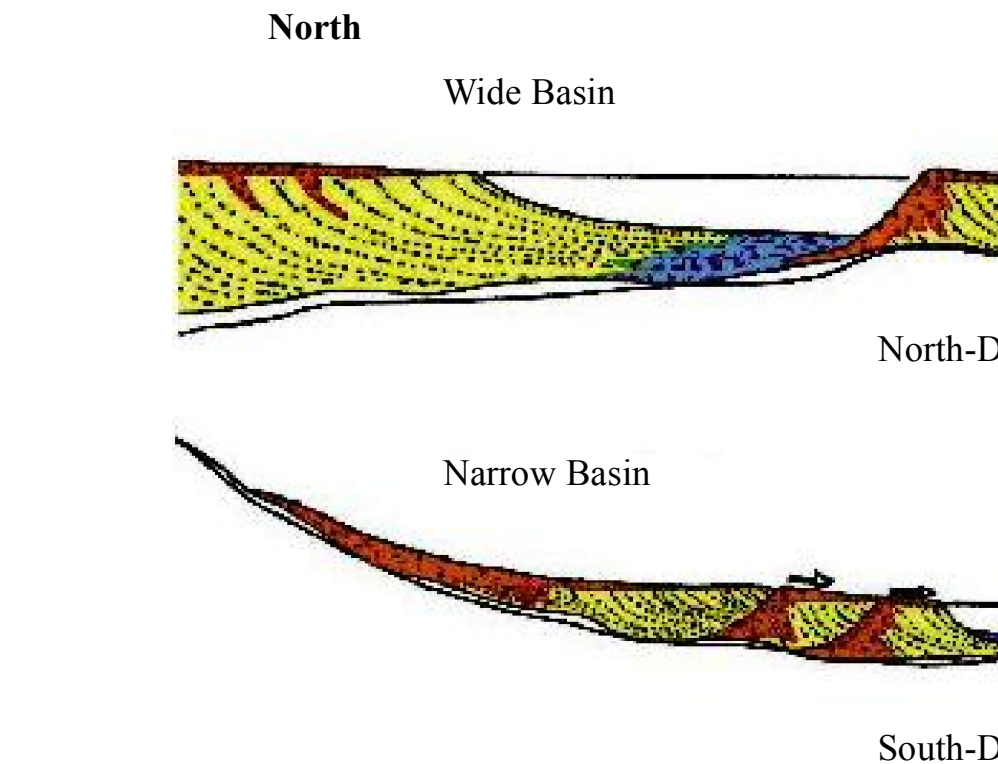


Figure 1: A morphosequence is a body of meltwater deposits composed of a continuum of land forms, grading from ice-contact forms (eskers, kames) to non-ice-contact forms (flat valley terrace, delta plains), that were deposited simultaneously at and beyond the margin of a glacier, graded to a specific base level. Grain-size decreases from coarse grained glacial ice-contact heads, through sand and gravel and sand beneath delta plains and foreset slopes to silt and clay in lake-bottom deposits (after Stone and others, 2005).

Postglacial Deposits (flood-plain alluvium and swamp deposits, but also including stream-terrace, talus, dune, tidal-marsh, beach, channel fill, marine delta deposits, and artificial fill) are less widely distributed and are typically thinner than the glacial deposits that they overlie. The oldest postglacial deposits occur in Long Island Sound and in southeastern Connecticut because these areas were deglaciated first. Many of the depositional processes that were initiated as postglacial conditions began to prevail are still operative today.

Postglacial deposits provide locally important ecological, agricultural, commercial, and recreational resources. Talus, a result of rockfall at the base of steep bedrock (primary) top rock cliffs, and inland dune deposits, that developed as winds swept across newly exposed glacial lake beds, provide ecological niches that are unique to Connecticut. Beach, dune, marsh and swamp deposits are key ecological elements of coastal and poorly drained inland settings. Deposits of floodplain alluvium are largely composed of sands, gravels and silts that have been reworked from glacial deposits and mixed with organic matter which increases their fertility. Despite their flood-prone nature, low, flat, fertile floodplains have historically been attractive for agricultural uses and development related to water-dependent commerce.

DATA SOURCES

QUATERNARY GEOLOGY DATA - Quaternary Geology shown on this map are from the Quaternary Geology Poly, Point Feature, and Line Feature dataset intended to be used at 1:24,000 scale. Based on Connecticut Quaternary Geology digital spatial data published in 2005 by the U.S. Geological Survey, in cooperation with the Connecticut Department of Environmental Protection. These data were digitized from the 1:24,000-scale compilation sheets prepared for the statewide Quaternary Geology Map of Connecticut, (Stone, J.R., Schaller, J.P., London, E.H., DiGiacoia-Cohen, M.L., Lewis, R.S., and Thompson, W.B., 2005, U.S. Geological Survey special map, 2 sheets, scale 1:125,000).

BASE MAP DATA - Based on data originally from 1:24,000-scale USGS 7.5 minute topographic quadrangle maps published between 1969 and 1992. It includes political boundaries, railroads, airports, hydrography, geographic names and geographic places. Streets and street names are from Tele Atlas' copyrighted data. Base map information is neither current nor complete.

CONTOUR DATA - Derived from Connecticut's 2000 statewide LIDAR, (Light Detection And Ranging) dataset by the University of Connecticut, College of Agriculture and Natural Resources, Department of Natural Resources and the Environment. These data are a Beta product intended for research and demonstration purposes. NOTE: Contour line data is known to be incorrect in some areas due to anomalies in the underlying elevation data used to generate those specific contour lines. Areas where contour lines are not straight or angular, do not naturally curve where expected, or don't exist where they probably should are good indications of erroneous data.

RELATED INFORMATION
This map is intended to be printed at its original dimensions, (48 x 36 in), in order to maintain the 1:24,000 scale (1 inch = 2,000 feet).
QUATERNARY GEOLOGY AND SURFICIAL MATERIALS DATA - 1:24,000-scale digital spatial data of Connecticut Quaternary Geology and Surficial Materials combined into one dataset, published by the Connecticut Department of Environmental Protection, in cooperation with the U.S. Geological Survey. These data were digitized from the 1:24,000-scale compilation sheets prepared for both the Surficial Materials Map of Connecticut, (Stone, J.R., Schaller, J.P., London, E.H., and Thompson, W.B., 1992, U.S. Geological Survey Special Map, 2 sheets, scale 1:125,000, map and pamphlet, 71 p.) and the Quaternary Geologic Map of Connecticut and Long Island Sound Basin, (Stone, J.R., Schaller, J.P., London, E.H., DiGiacoia-Cohen, M.L., Lewis, R.L., and Thompson, W.B., 2005, U.S. Geological Survey Scientific Investigation Map 2784, 2 sheets, scale 1:125,000).

OTHER GEOLOGIC MAPS - This map is also available for individual USGS topographic quadrangles of Connecticut. This map is intended to be used with other bedrock, surficial, and quaternary (glacial) geology town maps and reports published by the Connecticut Geological and Natural History Survey, USGS, and others. These maps are reports are also available from CT DEP.

MAPS AND DIGITAL DATA - Go to the CT ECHO website for this map and a variety of others. Go to the CT DEP website for the digital spatial data shown on this map.

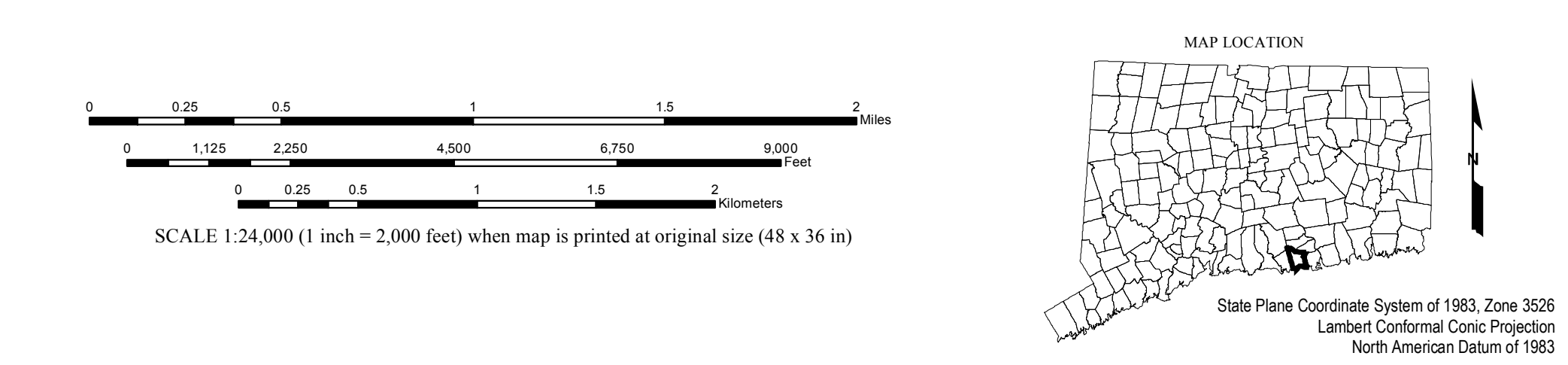
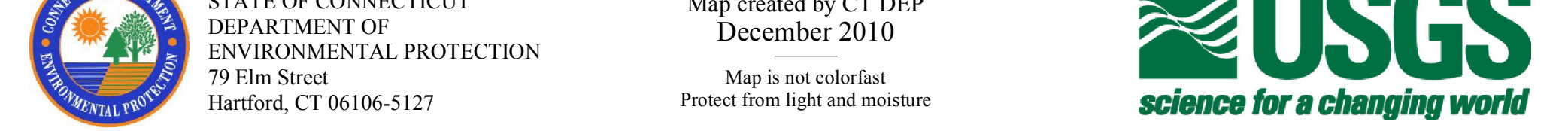


Figure 2: Scenario for morphosequence development in ice-dammed (Top) and sediment-dammed basins (Bottom). The mechanism of impoundment and the chronological and topographic positions of the deposits are related to the orientation of the basins relative to the direction of ice retreat. These relationships are reflected in the organization and color coding of the List of Map Units (after Stone and others, 2005).



STATE OF CONNECTICUT
DEPARTMENT OF ENVIRONMENTAL PROTECTION
79 Elm Street
Hartford, CT 06106-5127

Map created by CT DEP
December 2010

Map is not colorfast
Protect from light and moisture

USGS
science for a changing world