

# QUATERNARY GEOLOGY WETHERSFIELD, CONNECTICUT

## LIST OF MAP UNITS

POSTGLACIAL DEPOSITS - late Holocene, late Wisconsinan	GLACIAL MELT-WATER DEPOSITS - late Wisconsinan	Explanation of Map Symbols
Artificial Fill	Undifferentiated Meltwater Deposits	Ice Margin Position
Coastal Beach and Dune Deposits	Deposits of Major Ice-Dammed Lakes	Inferred Ice Margin Position
Tidal Marsh Deposits	Deposits of Major Sediment-Dammed Lakes	Esker
Floodplain Alluvium	Deposits of Related Series of Major Ice-Dammed Ponds	Glacial Striation or Groove
Swamp Deposits	Deposits of Related Series of Major Sediment-Dammed Ponds	Drumlin Axis and Center
Talus	Deposits of Proximal Meltwater Streams	Meltwater Channel
Stream Terrace Deposits	Deposits of Distal Meltwater Streams	Glacial Lake Spillway
Inland Dune Deposits	GLACIAL ICE-LAID DEPOSITS - late Wisconsinan, Illinoian	Inferred Glacial Spillway
	Thin Till Deposits	Location of Lower Till
	Thick Till Deposits	Two-Till Outcrop
	End Moraine Deposits	Delatic Bedding Locality
		Weathered Bedrock Outcrop
		Radiocarbon-Dated Locality

Explanation of Map Symbols	Elevation Contours
Area of glacial/ice deposits grading to glacial lake	100 Ft. Interval
Area of lake-bottom sediments	50 Ft. Interval
Drainage Divide - Boundary between major geologic basins	
Drainage Divide - Boundary within major geologic basin dividing it into north-draining and south-draining regions	

## EXPLANATION

Quaternary Geology is a 1:24,000-scale data that illustrates the geologic features formed in Connecticut during the Quaternary Period, which spans from 2.588 ± 0.005 million years ago to the present and includes the Pleistocene (glacial) and Holocene (postglacial) epochs. The Quaternary Period has been a time of development of many details of the Connecticut landscape and all surficial deposits. At least twice in the last Pleistocene, continental ice sheets swept across Connecticut from the north. Their effects are of present-day importance to the geology of the land.

The Quaternary Geology information illustrates the geologic history and the distribution of depositional environments during the emplacement of unconsolidated glacial and postglacial surficial deposits and the landforms resulting from these events in Connecticut. These deposits range from a few feet to several hundred feet in thickness, overlie the bedrock surface and underlie the organic soil layer of Connecticut. Quaternary Geology is mapped without regard for any organic soil layer that may overlie the deposit.

The Connecticut Quaternary Geology information was initially compiled at a 1:24,000 scale (1 inch = 2,000 feet) then recompiled for a statewide 1:125,000-scale map, Quaternary Geology Map of Connecticut and Long Island Sound Basin. A companion map, the Surficial Materials Map of Connecticut, emphasizes the surface and subsurface texture (grain-size distribution) of these materials. The Quaternary geology and surficial material features portrayed on these two maps are very closely related, each contributes to the interpretation of the other.

Most of Connecticut's surficial material is glacially derived, and can be divided into two broad depositional categories: Glacial Ice-Laid Deposits (nonsorted and generally nonstratified thin till, thick till, and end moraine) which are generally exposed in the uplands, and are the most widespread surficial deposit in Connecticut; and Glacial Meltwater Deposits (sorted and stratified delatic, river bottom, lake bottom, and inland dune deposits) which are most commonly concentrated in valleys and lowlands.

Particular attention has been paid to understanding the distribution and characteristics of stratified meltwater deposits because they have historically influenced development patterns and groundwater availability throughout the state. Within the meltwater category, six classes of deposits have been recognized based on the conditions that prevail during their emplacement. Four of the seven indicate whether previously deposited sediment, or the glacier itself, impounded the lake or pond where emplacement occurred (see the meltwater deposit discussion below). Meltwater stream deposits are differentiated based on their distance (proximal or distal) from the ice sheet when they were emplaced, and a separate meltwater map unit is reserved for deposits of undetermined provenance (unsorted).

Postglacial Deposits were emplaced by various processes after the melt back of the last ice sheet. Some of these deposits were emplaced early in post-glacial time and have been grouped together as Early Postglacial Deposits. Later deposits, resulting from processes that are still active (or are manmade), have been grouped together as Postglacial Deposits.

Glacial Ice-Laid Deposits (nonsorted and generally nonstratified thin till, thick till, and end moraine), Glacial Meltwater Deposits (sorted and stratified delatic, river bottom, lake bottom, and inland dune deposits), and Postglacial Deposits (flood-plain alluvium and swamp deposits, but also including stream-terrace, talus, dune, tidal-marsh, beach, channel fill, marine delta deposits, and artificial fill) that were emplaced in comparable topographic and depositional settings, and therefore share similar characteristics, are categorized and color coded in the Legend Description. Related Map Elements include eskers, drumlin axes, ice-margin positions, scarp, drainage divides, glacial lake spillways, meltwater channels, streamlines, grooves, dated sample locations, glacial/ice-lake-bottom facies as overlays on glacial lake map units and various types of exposures.

**Glacial Ice-Laid Deposits** (nonsorted and generally nonstratified thin till, thick till, and end moraine) were derived directly from the ice and consist of unsorted, generally nonstratified mixtures of grain-sizes ranging from clay to large boulders. The matrix of most tills is predominantly sand and silt, and boulders can be sparse to abundant. Some tills contain lenses of sorted sand and gravel and occasionally masses of laminated fine-grained sediment. The lack of sorting and stratification typical of ice-laid deposits often makes them poorly drained, difficult to dig in or plow, makes them sources of groundwater and unsuited for septic systems. Till blankets the bedrock surface in variable thicknesses and commonly underlies stratified meltwater deposits. End moraine deposits (primarily ablation till) occur primarily in southeastern Connecticut. Ice-laid deposits are inferred to be of Wisconsinan age except where exposures of older (probably Illinoian) till are shown. Drumlins are inferred to be composed of older till mantled by younger till.

**Glacial Meltwater Deposits** (sorted and stratified delatic, river bottom, lake bottom, and inland dune deposits) were laid down in glacial streams, lakes and ponds which occupied the valleys and lowlands of Connecticut as the last ice sheet systematically (Kottief and Post, 1981) melted away to the north. They are often composed of layers of well-sorted, poorly sorted sands, gravels, silts and clays with few to no boulders, and owing to their water-related depositional origins they have many characteristics that are favorable for development. Because water is a better sorting agent than ice, glacial meltwater deposits are commonly better sorted, more permeable, and better aquifers than ice-laid deposits. They can be good sources of construction aggregate, and are relatively easy to excavate and build highways and buildings on. Stratified meltwater deposits include both fine and coarse grained deposits such as silt, clay, sand, and gravel.

The mapping presented here and on the Quaternary Geology Map of Connecticut and Long Island Sound Basin is based on recognizing single bodies of sediment or assemblages of glacial sedimentary facies that can be identified as mappable units known as morphoquences (Kottief and Post, 1981). Different sedimentary facies are associated with fluvial, delatic and lake-bottom settings. Coarse proximal deposits are emplaced in high-energy settings at or near the ice front. Energy levels dropped off with distance from the glacier (initially) and grain size decreased along the path of meltwater flow. As a result, morphoquences are coarse grained at their collapsed, ice-contact heads and become finer distally (Figure 1). A detailed discussion of the complexities and significance of morphoquences is contained in the pamphlet that accompanies the Quaternary Geology Map of Connecticut and Long Island Sound Basin.

The mapping presented here and on the Quaternary Geology Map of Connecticut and Long Island Sound Basin is based on recognizing single bodies of sediment or assemblages of glacial sedimentary facies that can be identified as mappable units known as morphoquences (Kottief and Post, 1981). Different sedimentary facies are associated with fluvial, delatic and lake-bottom settings. Coarse proximal deposits are emplaced in high-energy settings at or near the ice front. Energy levels dropped off with distance from the glacier (initially) and grain size decreased along the path of meltwater flow. As a result, morphoquences are coarse grained at their collapsed, ice-contact heads and become finer distally (Figure 1). A detailed discussion of the complexities and significance of morphoquences is contained in the pamphlet that accompanies the Quaternary Geology Map of Connecticut and Long Island Sound Basin.

The mapping presented here and on the Quaternary Geology Map of Connecticut and Long Island Sound Basin is based on recognizing single bodies of sediment or assemblages of glacial sedimentary facies that can be identified as mappable units known as morphoquences (Kottief and Post, 1981). Different sedimentary facies are associated with fluvial, delatic and lake-bottom settings. Coarse proximal deposits are emplaced in high-energy settings at or near the ice front. Energy levels dropped off with distance from the glacier (initially) and grain size decreased along the path of meltwater flow. As a result, morphoquences are coarse grained at their collapsed, ice-contact heads and become finer distally (Figure 1). A detailed discussion of the complexities and significance of morphoquences is contained in the pamphlet that accompanies the Quaternary Geology Map of Connecticut and Long Island Sound Basin.

The mapping presented here and on the Quaternary Geology Map of Connecticut and Long Island Sound Basin is based on recognizing single bodies of sediment or assemblages of glacial sedimentary facies that can be identified as mappable units known as morphoquences (Kottief and Post, 1981). Different sedimentary facies are associated with fluvial, delatic and lake-bottom settings. Coarse proximal deposits are emplaced in high-energy settings at or near the ice front. Energy levels dropped off with distance from the glacier (initially) and grain size decreased along the path of meltwater flow. As a result, morphoquences are coarse grained at their collapsed, ice-contact heads and become finer distally (Figure 1). A detailed discussion of the complexities and significance of morphoquences is contained in the pamphlet that accompanies the Quaternary Geology Map of Connecticut and Long Island Sound Basin.

Deposition of the morphoquences that progressively filled bedrock valleys and lowlands as the last glacier melted northward required the presence of impounded lakes and ponds. The nature of the impoundment and the resulting distribution of the meltwater deposits on the landscape were controlled by the topography of the area being deglaciated. Where a northward succession of ice positions was established as south-draining basins, previously deposited sediment formed the dams, and the oldest morphoquences occupied the lowest, widest parts of the valley. Deposition then progressed up valley, with the youngest depositional sequences occupying higher, narrower portions of the valley (Figure 2). In north-draining systems the opposite is true. The ice itself was the impoundment, and the oldest morphoquences were emplaced in the higher, narrower portions of the basin. As the ice front retreated northward, a succession of river bedrock spillways was opened and the valleys widened. In this case, the youngest depositional sequences occupied the lowest, widest portions of the valley (Figure 2).

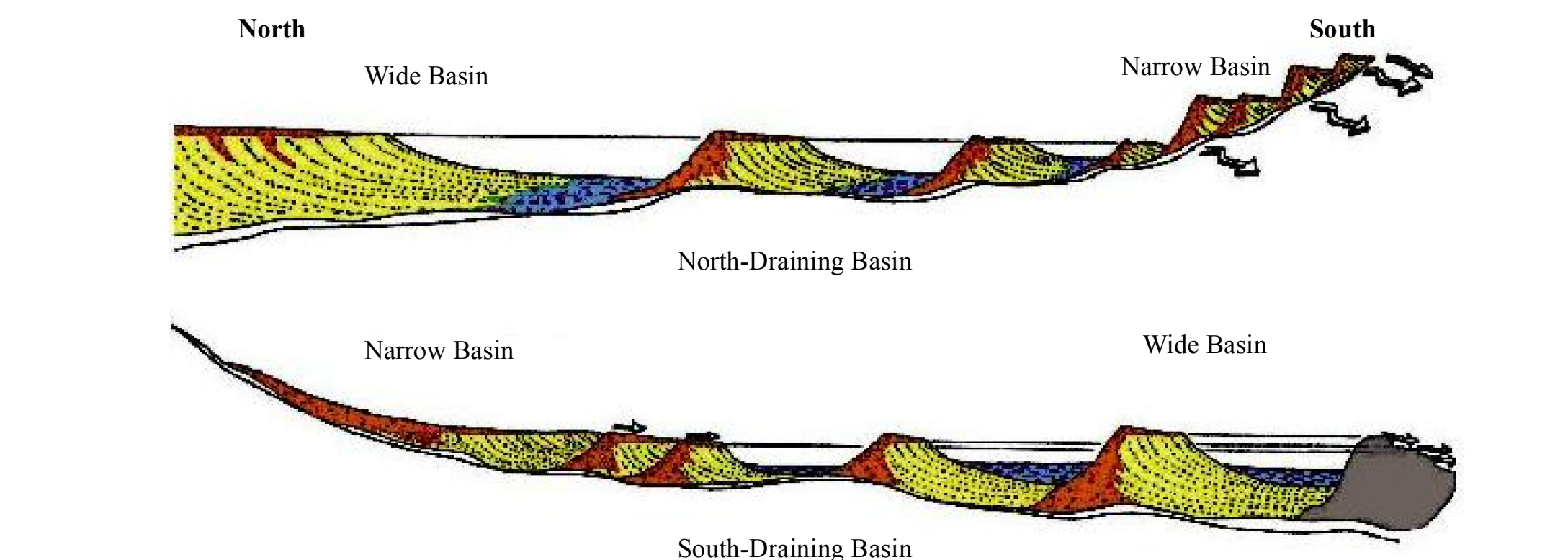


Figure 2: Scenario for morphoquence development in ice-dammed (Top) and sediment-dammed basins (Bottom). The mechanism of impoundment and the chronological and topographic positions of the deposits are related to the orientation of the basin relative to the direction of ice retreat. These relationships are reflected in the organization and color coding of the List of Map Units (after Stone and others, 2005).

Postglacial Deposits (flood-plain alluvium and swamp deposits, but also including stream-terrace, talus, dune, tidal-marsh, beach, channel fill, marine delta deposits, and artificial fill) are less widely distributed and are typically thinner than the glacial deposits that overlie. The oldest postglacial deposits occur in Long Island Sound and in southeastern Connecticut because these areas were deglaciated first. Many of the postglacial processes that were initiated as postglacial conditions began to prevail are still operative today.

Postglacial deposits provide locally important ecological, agricultural, commercial, and recreational resources. Talus, a result of rockfall at the base of steep bedrock (primarily trap rocks) cliffs, and inland dune deposits, that developed as winds swept across newly exposed glacial lake beds, provide ecological niches that are unique to Connecticut. Beach, dune, marsh and swamp deposits are key ecological elements of coastal and poorly drained inland settings. Deposits of floodplain alluvium are largely composed of sands, gravels and silts that have been reworked from glacial deposits and mixed with organic matter which increases their fertility. Despite their flood-prone nature, lake flat, fertile floodplains have historically been attractive for agricultural uses and development related to water-dependent commerce.

## DATA SOURCES

**QUATERNARY GEOLOGY DATA** - Quaternary Geology shown on this map are from the Quaternary Geology Poly, Point Feature, and Line Feature dataset intended to be used at 1:24,000 scale. Based on Connecticut Quaternary Geology digital spatial data published in 2005 by the U.S. Geological Survey, in cooperation with the Connecticut Department of Environmental Protection. These data were digitized from the 1:24,000-scale compilation sheets prepared for the statewide Quaternary Geology Map of Connecticut (Stone, J.R., Schuler, J.P., London, E.H., DiGiacoia-Cohen, M.L., Lewis, R.S., and Thompson, W.B., 2005, U.S. Geological Survey special map, 2 sheets, scale 1:125,000).

**BASE MAP DATA** - Based on data originally from 1:24,000-scale USGS 7.5 minute topographic quadrangle maps published between 1969 and 1992. It includes political boundaries, railroads, airports, hydrography, geographic names, and geographic places. Streets and street names are from Tele Atlas' copyrighted data. Base map information is neither current nor complete.

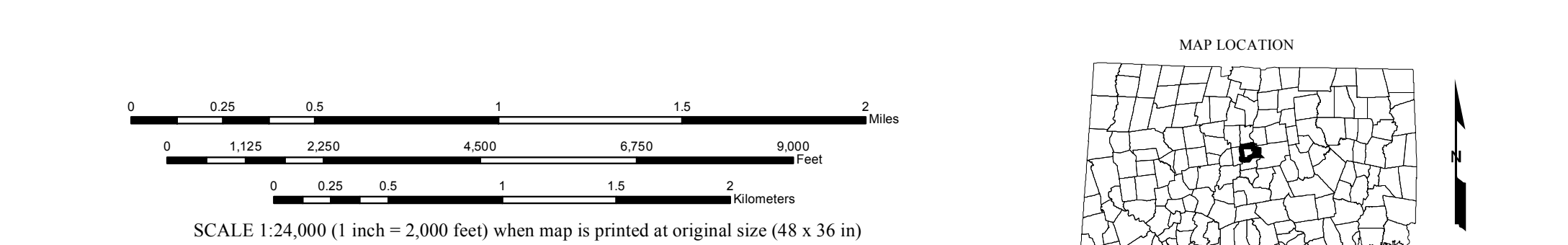
**CONTOUR DATA** - Derived from Connecticut's 2000 statewide LIDAR (Light Detection And Ranging) of Connecticut, College of Connecticut, College of Agriculture and Natural Resources, Department of Natural Resources and the Environment. These data are a beta product intended for research and demonstration purposes. NOTE: Contour lines data is known to be incorrect in some areas due to anomalies in the underlying elevation data used to generate these specific contour lines. Areas where contour lines are not naturally or angular, do not naturally curve where expected, or don't exist where they probably should are good indications of erroneous data.

**RELATED INFORMATION** - This map is intended to be printed at its original dimensions (48 x 36 in), in order to maintain the 1:24,000 scale (1 inch = 2,000 feet).

**QUATERNARY GEOLOGY AND SURFICIAL MATERIALS DATA** - 1:24,000-scale digital spatial data of Connecticut Quaternary Geology and Surficial Materials combined into one dataset, published by the Connecticut Department of Environmental Protection, in cooperation with the U.S. Geological Survey. These data were digitized from the 1:24,000-scale compilation sheets prepared for both the Surficial Materials Map of Connecticut (Stone, J.R., Schuler, J.P., London, E.H., and Thompson, W.B., 1992, U.S. Geological Survey Special Map, 2 sheets, scale 1:125,000, map and pamphlet, 71 p.) and the Quaternary Geology Map of Connecticut and Long Island Sound Basin (Stone, J.R., Schuler, J.P., London, E.H., DiGiacoia-Cohen, M.L., Lewis, R.S., and Thompson, W.B., 2005, U.S. Geological Survey Scientific Investigation Map 2784, 2 sheets, scale 1:125,000).

**OTHER GEOLOGIC MAPS** - This map is also available for individual USGS topographic quadrangles of Connecticut. This map is intended to be used with other bedrock, surficial, and quaternary (glacial) geology town maps and reports published by the Connecticut Geological and Natural History Survey, USGS, and others. Those maps are reports are also available from CT DEP.

**MAPS AND DIGITAL DATA** - Go to the CT DEP website for this map and a variety of others. Go to the CT DEP website for the digital spatial data shown on this map.



STATE OF CONNECTICUT  
DEPARTMENT OF ENVIRONMENTAL PROTECTION  
79 Elm Street  
Hartford, CT 06106-5127

