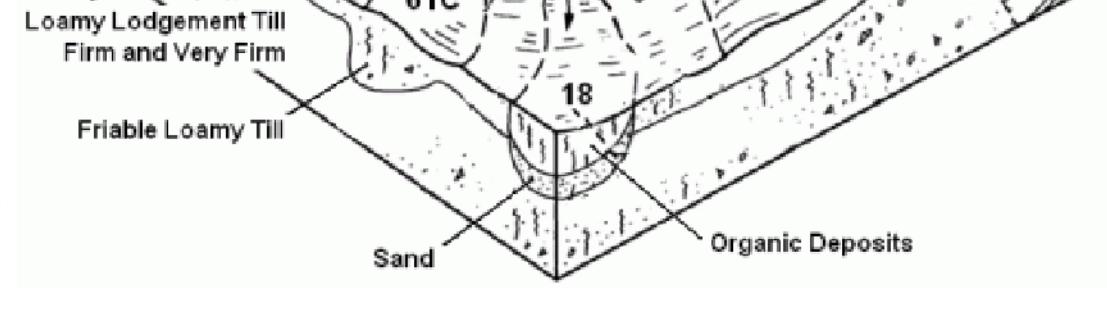


[illegible][illegible]

Soils occur in a repeating and recognizable pattern on the landscape. Soil maps are made by separating the landscape into map units. Each soil map unit is a collection of soils that share similar characteristics. Each map unit is uniquely identified on a soil map. A soil map unit represents an area dominated by one to three major soil components. They are usually a combination of soil texture (e.g., sand, silt, and clay), soil structure (e.g., *in situ* (i.e. Root Orchard or Urban Land), and potentially many minor components both similar and dissimilar. For example, soil map unit 75C (Chalky, 15% Root Orchard, 15% Root Orchard, 20% may include (Charlton, Leicester, Sutton, Brimfield, an unnamed soil with sandy subsoil, and an unnamed soil with red parent material).

The soil survey contains interpretations or ratings of the soils for various land uses which are based on the soil properties that affect the intended use. The soil survey is a tool that can be used to make predictions of soil behavior to help in the development of reasonable and effective alternatives for the use and management of soil, water, air, and other resources. The soil survey is a tool that can be used to help revised to reflect improved soils data, new technology, and the needs of the soil survey users. In Connecticut, there are approximately 70 soil survey units and 50 interpretations that are covered within the soil database.

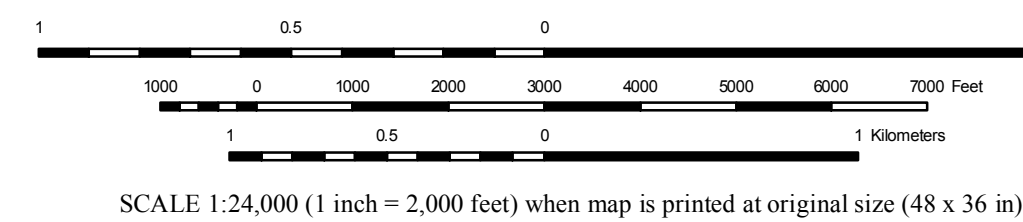


The soil map unit symbol is the key to indentifying the multitude of descriptions, properties, interpretations, reports and ratings that are included in the soil survey. Some of the most requested interpretations are available from CT ECO, such as Farmland Soils, Connecticut Inland Wetland Soils, Soil Storm Water Management ratings, and others.

Additional information is available in the Soil Survey of the State of Connecticut <http://www.ct.nrcs.usda.gov/soils.html> and at the Soil Data Mart <http://soildatamart.nrcs.usda.gov>.

**SOIL DATA** - Soil map units shown on this map are from the 2007 Soil Survey Geographic Database (SSURGO) database produced by the USDA, Natural Resources Conservation Service (NRCS). The soils were mapped at a scale of 1:12,000 with a minimum size delineation of three acres. Enlargement of this map beyond the original source scale will not show additional detail and can cause misunderstanding of the detail of mapping. For the most recent soils data contact the NRCS.

BASE MAP DATA - Based on data originally from 1:24,000-scale USGS 7.5 minute topographic quadrangle maps published between 1969 and 1992. It includes political boundaries, railroads, airports, hydrography, geographic names and geographic places. Streets and street names are from Tele Atlas copyrighted data. Base map information is neither current nor complete.



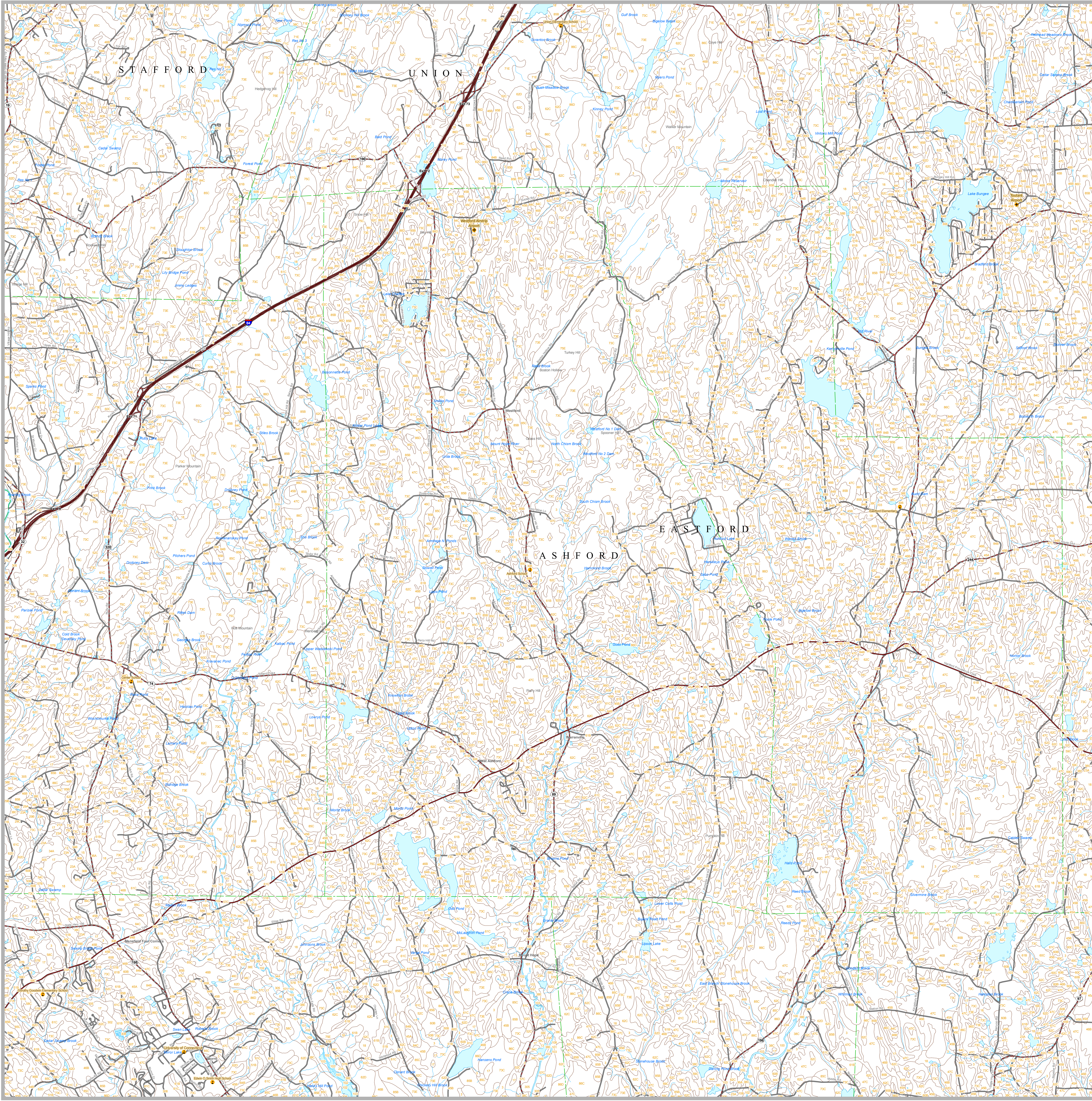
MAP LOCATION

1 Miles

Foot

36 in)  State Plane Coordinate System of 1983, Zone 35  
Lambert Conformal Conic Projection  
North American Datum of 1983

Map created by CT DEP  
October 2009  
Map is not colorfast  
Protect from light and moisture



STATE OF CONNECTICUT  
DEPARTMENT OF  
ENVIRONMENTAL PROTECTION  
79 Elm Street  
Hartford, CT 06106-5127

Map created by CT DEP  
October 2009  
Map is not colorfast  
Protect from light and moisture

U.S. Department of Agriculture

**NRCS** Natural Resources Conservation Service