

SOIL PARENT MATERIAL

OLD LYME, CONNECTICUT

LEGEND



EXPLANATION

Parent material is a term for the general physical, chemical, and mineralogical composition of the unconsolidated material, mineral or organic, in which the soil forms. Mode of deposition and/or weathering may be implied by the name.

The soil surveyor uses parent material to develop a model used for soil mapping. Soil scientists and specialists in other disciplines use parent material to help interpret soil boundaries and project

performance of the material below the soil. Many soil properties relate to parent material. Among these properties are proportions of sand, silt, and clay; chemical content; bulk density; structure; and the kinds and amounts of rock fragments. These properties affect interpretations and may be criteria used to separate soil series. Soil properties and landscape information may imply the kind of parent material.

DATA SOURCES

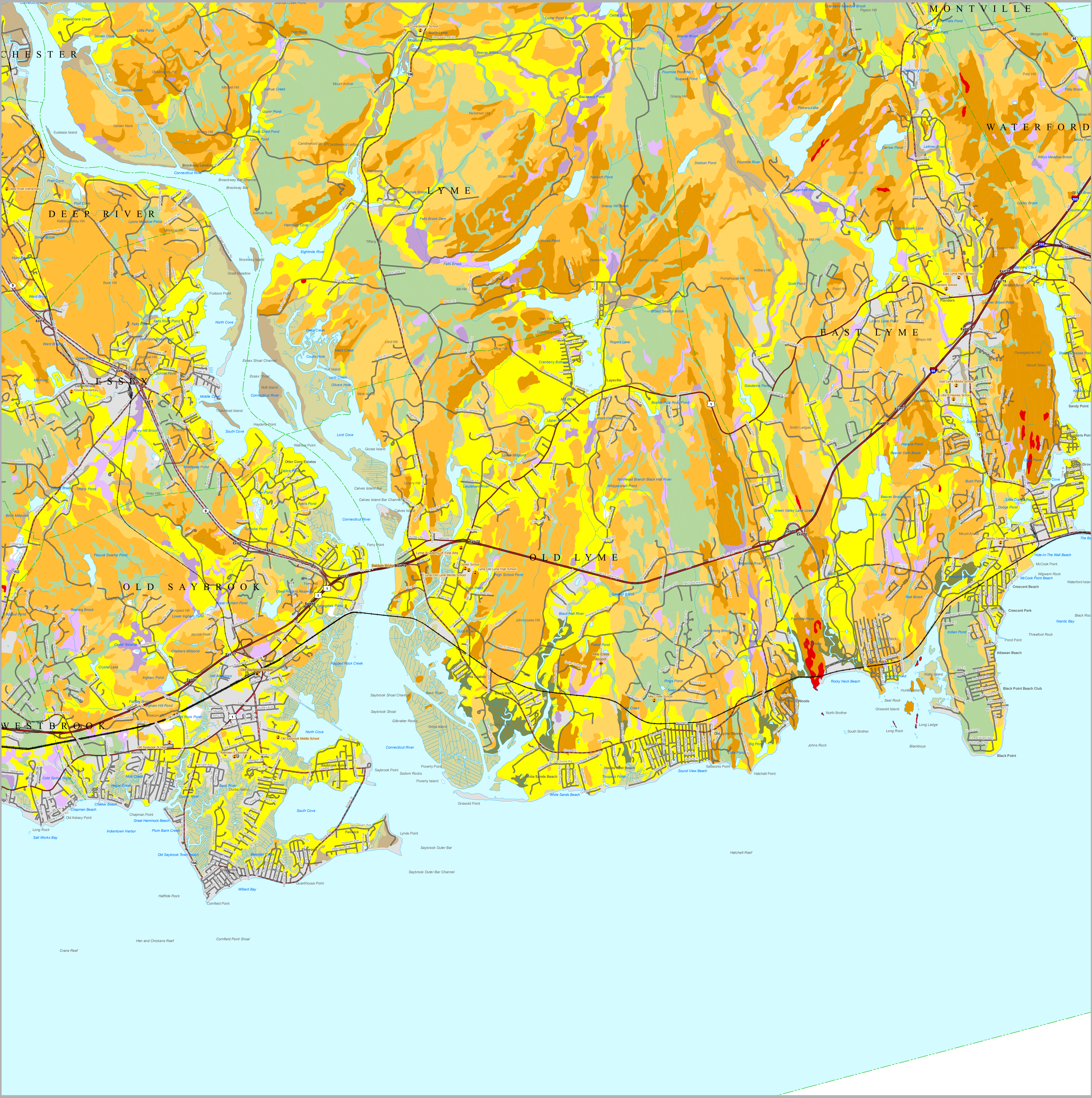
SOIL DATA - Soil map units shown on this map are from the 2007 Soil Survey Geographic Database (SSURGO) database produced by the USDA, Natural Resources Conservation Service (NRCS). The soils were mapped at a scale of 1:12,000 with a minimum size delineation of three acres. Enlargement of this map beyond the original source scale will not show additional detail and can cause misunderstanding of the detail of mapping. For the most recent soils data contact the NRCS.

BASE MAP DATA - Based on data originally from 1:24,000-scale USGS 7.5 minute topographic quadrangle maps published between 1969 and 1992. It includes political boundaries, railroads, airports,

hydrography, geographic names and geographic places. Streets and street names are from Tele Atlas copyrighted data. Base map information is neither current nor complete.

RELATED INFORMATION
This map is intended to be printed at its original dimensions in order to maintain the 1:24,000 scale (1 inch = 2000 feet).

MAPS AND DIGITAL DATA - Visit the CT ECO website for this map and a variety of others. Visit the NRCS soils website for the soils data shown on this map. Visit the CT DEP website to download the base map digital spatial data shown on this map.



STATE OF CONNECTICUT
DEPARTMENT OF
ENVIRONMENTAL PROTECTION
79 Elm Street
Hartford, CT 06106-5127

Map prepared by CT DEP
October 2009
Map is not colorfast
Protect from light and moisture



The NRCS is an equal opportunity provider and employer.