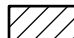




Natural Diversity Data Base Areas

CLINTON, CT
December 2024

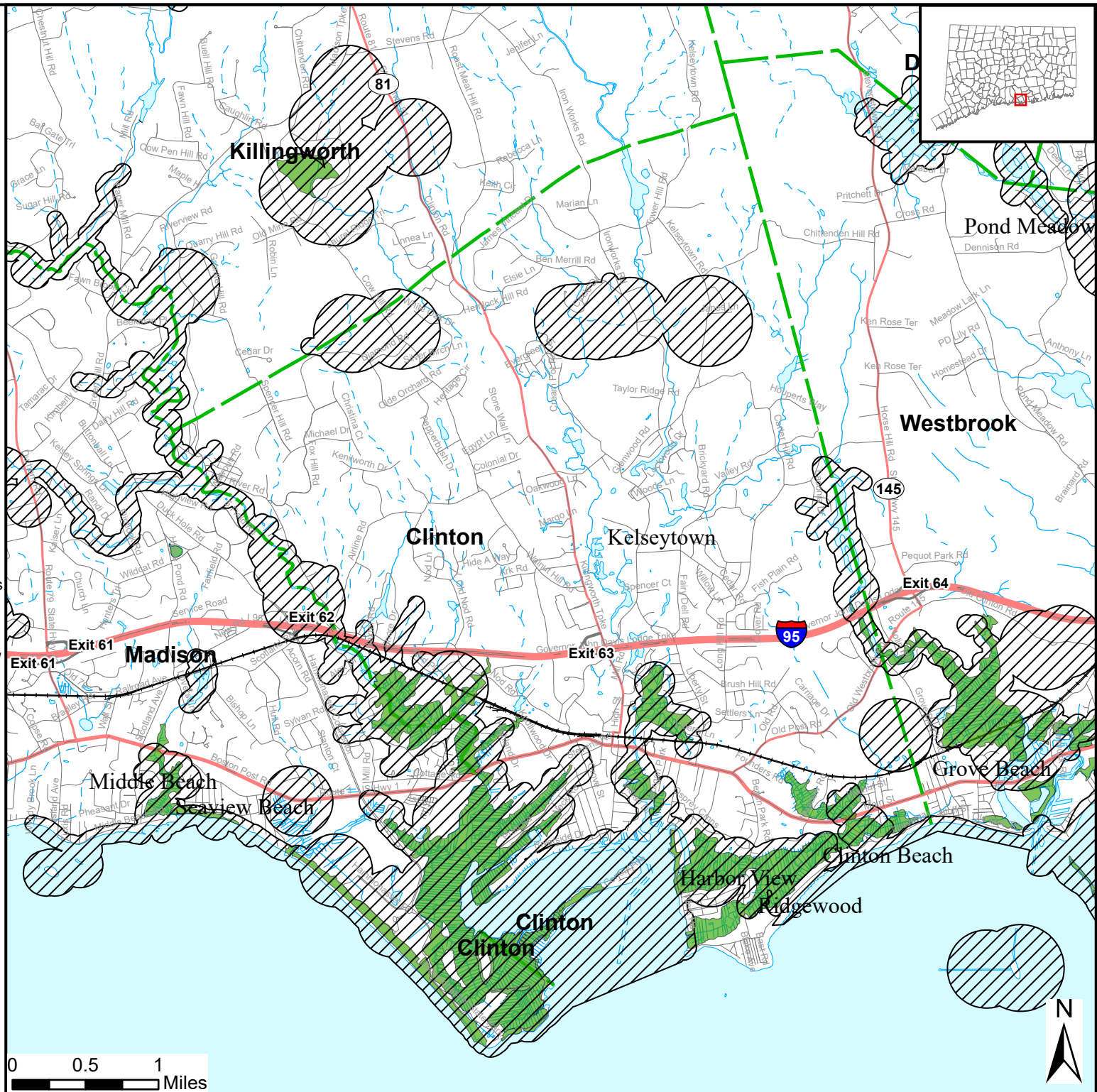
-  State and Federal Listed Species
-  Critical Habitat
-  Town Boundary

NOTE: This map shows known locations of State and Federal Listed Species and Critical Habitats. Information on listed species is collected and compiled by the Natural Diversity Data Base (NDDB) from a variety of data sources. Exact locations of species have been buffered to produce the generalized locations.

This map is intended for use as a preliminary screening tool for conducting a Natural Diversity Data Base Review Request. To use the map, locate the project boundaries and any additional affected areas. If the project is within a hatched area there may be a potential conflict with a listed species. For more information, use DEEP ezFile <https://filings.deep.ct.gov/DEEPPortal/> to submit a Request for Natural Diversity Data Base State Listed Species Review or Site Assessment. More detailed instructions are provided along with the request form on our website. <https://portal.ct.gov/deep-nddbrequest>

Use the CTECO Interactive Map Viewers at <http://cteco.uconn.edu> to more precisely search for and locate a site and to view aerial imagery with NDDB Areas.

QUESTIONS: Department of Energy and Environmental Protection (DEEP)
79 Elm St, Hartford, CT 06106
email: deep.nddbrequest@ct.gov
Phone: (860) 424-3011



0 0.5 1 Miles