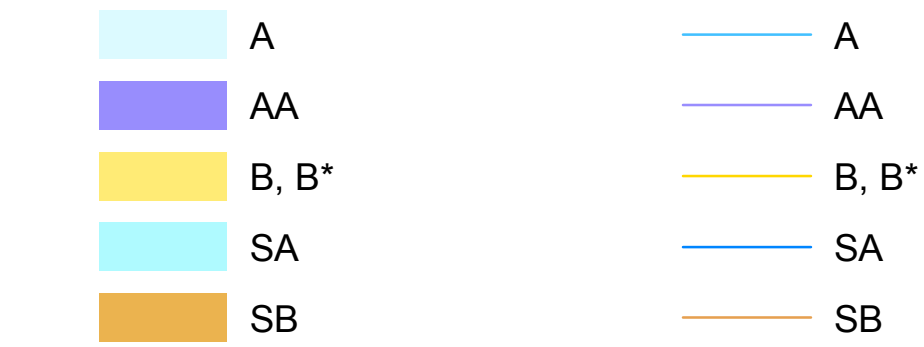


# WATER QUALITY CLASSIFICATIONS

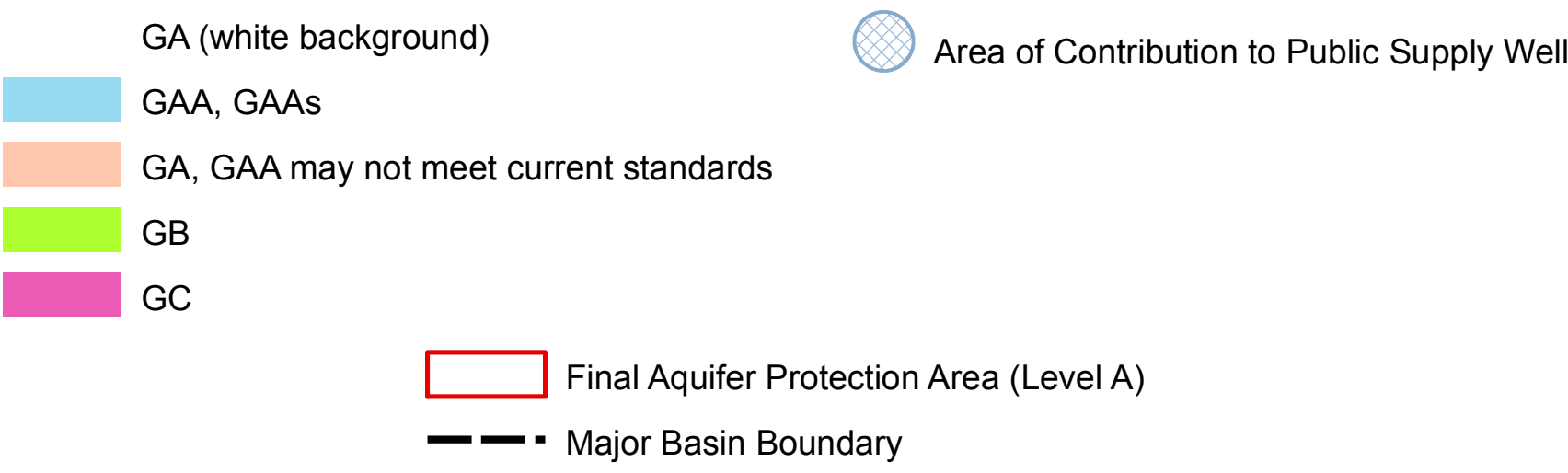
## SOMERS, CT

### SURFACE WATER QUALITY CLASSES



**NOTES:**  
Surface Water Classifications beginning with S refer to Coastal and Marine Surface Water.  
B\* is a subset of Class B where no direct wastewater discharges are allowed other than those consistent with Class AA, A and SA surface waters.

### GROUND WATER QUALITY CLASSES



### EXPLANATION

WATER QUALITY CLASSIFICATIONS (WQC) MAPS are one of the elements of the Water Quality Standards (WQS) for the State of Connecticut. The WQS are a part of Connecticut's clean water program and are essential for protecting and improving water quality. The WQS follow the principles of Connecticut's Clean Water Act which is in Chapter 446K of the Connecticut General Statutes. The WQS provide policy guidance in many areas, for example decisions on acceptable discharges to water resources, siting of landfills, remediation or prioritization of municipal sewerage system projects. The first two elements of the WQS are the Standards, which set an overall policy for management of water quality, and the Criteria, which are descriptive and numerical standards that describe the allowable parameters and goals for various water quality classifications. A discussion of these two elements is found in the Water Quality Standards document available on the CT DEEP website. The third element is the Classifications and the Water Quality Classification Maps which show the Classification assigned to each surface and groundwater resource throughout the State. The WQS are adopted using a public participation process. The WQC maps are also adopted using a public participation process but go through hearings separately from the Standards and Criteria hearings. Revision and adoption of the WQC data occurs in accordance with the public participation procedures contained in Section 22a-26 of the Connecticut General Statutes. Ground WQC is subject to Connecticut regulation and changes must be reviewed and adopted. All changes to the Surface WQC require an adoption process which is subject to federal review and approval in addition to CT regulation. The adoption dates for the WQC by major drainage basin are: Housatonic River, Hudson River and Southwest Coastal Basins - March 1999; Connecticut River and South Central Coastal Basins - February 1993; Thames River, Pawcatuck River and Southeast Coastal Basins - December 1986. Surface Water Classifications do not change after the adoption date until the next major revision. Ground Water Classifications may change after the adoption date under specific circumstances. The map may have more than one WQC adoption date because a town may be in more than one major drainage basin.

**SURFACE WATERS** in Connecticut are divided into freshwater classified as AA, A, B or B\* and saline waters classified as SA or SB. Class AA designated uses are existing or proposed drinking water supplies; habitat for fish and other aquatic life and wildlife; recreation; and water supply for industry and agriculture. Class A designated uses are habitat for fish and other aquatic life and wildlife; potential drinking water supplies; recreation; navigation; and water supply for industry and agriculture. Class SA designated uses are habitat for marine fish, other aquatic life and wildlife; shellfish harvesting for direct human consumption; recreation; industrial water supply; and navigation. Class B designated uses are habitat for fish and aquatic life and wildlife; recreation; navigation; and industrial and agricultural water supply. Class B\* applicable to Candlewood Lake, is a subset of Class B and is identical in all ways to the designated uses, criteria and standards for Class B waters except for the restriction on direct discharges. Class SB designated uses are habitat for marine fish and aquatic life and wildlife; commercial shellfish harvesting; recreation; industrial water supply; and navigation.

### DATA SOURCES

**WATER QUALITY CLASSIFICATIONS DATA** - Water quality classifications shown on this map are based on information from the following digital spatial datasets that are typically shown together - Ground Water Quality Classifications Poly, Surface Water Quality Classifications Line, and Surface Water Quality Classifications Poly. The map legend above reflects the content of these three data sources. These WQC data were initially compiled on 1:24,000-scale 7.5 minute USGS topographic quadrangle maps and later digitized at 1:24,000 scale. For example, the Surface Water Quality Classifications Line and Surface Water Quality Classifications Poly digital data assigns surface water quality classifications to water bodies such as rivers, streams, reservoirs, lakes, ponds and coves found in 1:24,000-scale hydrography data available from CT DEEP. The hydrography data does not include all the waterbodies in Connecticut. The Ground Water Quality Classifications Poly data assigns ground water quality classifications, at 1:24,000 scale, to the remaining land areas in Connecticut.

**AQUIFER PROTECTION AREA DATA** - Aquifer Protection Areas shown on this map are from the Aquifer Protection Area digital dataset which contains polygon data intended to be used at 1:24,000 scale. The dataset contains regulated areas classified as Level A Aquifer Protection Area (Final) and Level B Aquifer Protection Area (Preliminary). The Level B areas are not shown on the WQC maps. The data was collected from 1991 to the present and is actively updated as Final area mapping replaces earlier Preliminary areas. The Aquifer Protection Areas are delineated by

the individual water companies owning the well fields and submitted to the CT DEEP for approval. Preliminary mapping provides a general estimate of the area contributing ground water to the well field. Final mapping is based on extensive, site-specific, detailed modeling of the ground water flow system. CT DEEP may adjust Final area boundaries to be consistent with 1:24,000 scale topography and base map data where appropriate during the approval process.

**MAJOR DRAINAGE BASIN DATA** - Major drainage basins shown on this map are from Major Basin Line data developed by CT DEEP and intended to be used at 1:24,000 scale.

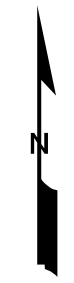
**BASE MAP DATA** - Based on data originally from 1:24,000-scale USGS 7.5 minute topographic quadrangle maps published between 1969 and 1992. It includes political boundaries, railroads, airports, hydrography, geographic names and geographic places. Streets and street names are from Tele Atlas' copyrighted data. Base map information is neither current nor complete.

**RELATED INFORMATION**  
This map is intended to be printed at its original dimensions in order to maintain the 1:24,000 scale (1 inch = 2000 feet).  
**WATER QUALITY STANDARDS** - Go to the CT DEEP website for a summary and the full text of the "Water Quality Standards" and for other information on water quality.  
**AQUIFER PROTECTION AREAS** - Go to the CT DEEP website for more information.

**ADOPTED DATES**  
Water Quality Standards  
February 25, 2011  
Thames River, Pawcatuck River and Southeast Coastal Basins: December 1986  
Connecticut River and South Central Coastal Basins: February 1993  
Housatonic River, Hudson River and Southwest Coastal Basins: March 1999

**MAJOR BASINS**  
1 Pawcatuck  
2 Southeast Coast  
3 Thames  
4 Connecticut  
5 South Central Coast  
6 Housatonic  
7 Southwest Coast  
8 Hudson

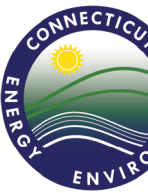
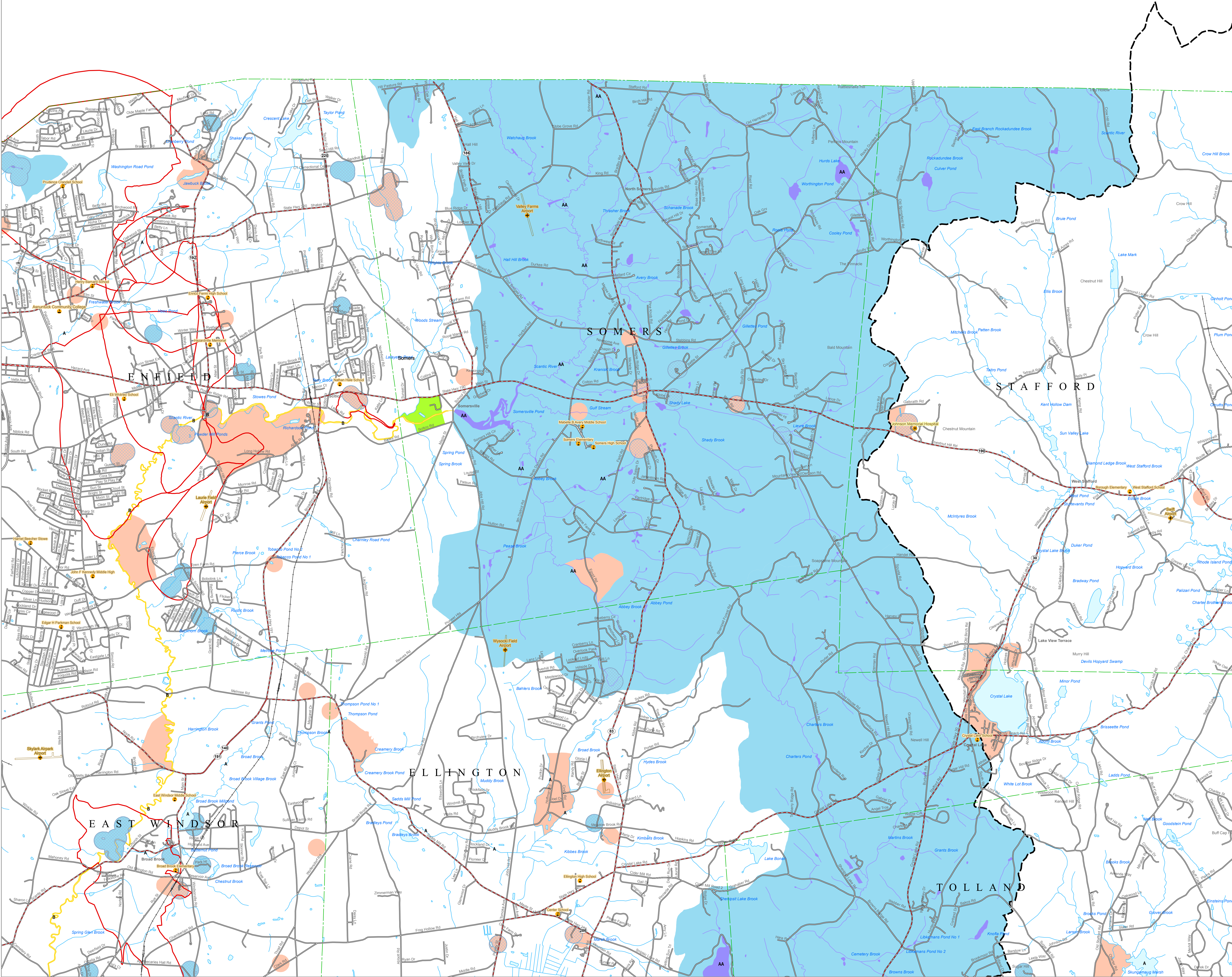
MAP LOCATION



State Plane Coordinate System of 1983, Zone 2026  
North American Datum of 1983

SCALE 1:24,000 (1 inch = 2000 feet) when map is printed at original size

Map created by CT DEEP  
October 2018  
Map is not colorfast  
Protect from light and moisture



STATE OF CONNECTICUT  
DEPARTMENT OF  
ENERGY & ENVIRONMENTAL PROTECTION  
79 Elm Street  
Hartford, CT 06106-5127